



Nicole Abrahamian

Associate Director

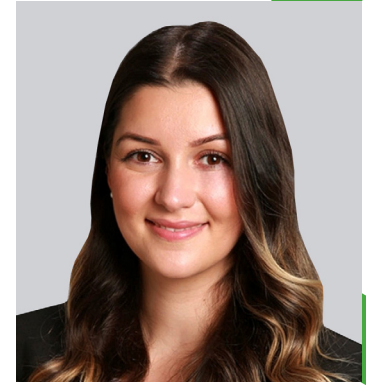
T: +1 (303) 482 1045 E: nabrahamian@delta-cgi.com

Nicole Abrahamian is an Associate Director in Delta Consulting Group's Insurance & Recovery practice. With extensive experience in forensic insurance and claims recovery, Nicole specializes in helping policyholders navigate complex, multi-location property and business interruption claims. She has led the preparation, quantification and resolution of major losses stemming from fires, floods, hurricanes, polar vortices, cross-country winter storms and builder's risk events, ensuring that clients are fully restored and recovery efforts align with policy terms and operational priorities.

Nicole's work spans a wide range of industries, including hospitality, multifamily residential and manufacturing. She is adept at coordinating multidisciplinary teams and streamlining recovery efforts between clients, insurers and counsel. Her background in law and business further enhances her ability to interpret complex insurance policies and deliver strategic guidance throughout the claims process.

Selected Project Experience

- ▶ Prepared 120 concurrent multi-family claims stemming from a winter storm event for a leading global private equity firm spanning across the Central and Eastern regions. Along with claim preparation, managed communications and reporting to Ownership, Portfolio Managers and Insurers on claim status and projected recovery across all impacted portfolio companies including hospitality, logistics, senior living and manufactured housing.
- ▶ Managed the preparation of a \$120M hospitality claim resulting from a wildfire that required the involvement of federal agencies to protect the natural and cultural heritage of national parks.
- ▶ Managed the preparation of a \$25M hospitality claim for a historic hotel that sustained several losses within a three-month period following the commencement of extensive renovation work, resulting in code upgrades mandated by the city. The complexity of the code requirements and the concurrent scopes of work necessitated detailed discussions and coordination efforts with architects and code experts to validate the upgrades and support the costs presented within the claim.
- ▶ Assisted in claim preparation for an equipment loss resulting from a fire for a \$10B cybersecurity solutions firm, which involved the evaluation of specialized equipment and quantification of repair lifespans to value a \$2M inventory loss.
- ▶ Performed evaluations of lost equipment and ancillary costs for a metallurgical coal production company to assist counsel in settlement negotiations.
- ▶ Managed the preparation of a \$10M hospitality loss stemming from Hurricane Helene that involved complex land use disputes, requiring a thorough understanding and explanation of access easements.
- ▶ Assisted in the preparation of a \$20M claim for a luxury hotel that sustained extensive damage from a rainstorm. The loss required the valuation of impacted contents across 400 guest rooms, requiring detailed analyses evidencing that design continuity was essential to preserve the hotel's brand standard.
- ▶ Assisted in claim preparation for a national manufacturer & distributor in the snack-foods industry that experienced a significant equipment loss involving custom manufacturing equipment.



EDUCATION

- **University of Southern California**
Master of Laws (LL.M.) – Certificate in Transnational Law & Business; Certificate in Business Law
- **University of London**
Graduate Diploma of Law
- **Queen Mary, University of London**
Master of Arts in Comparative Literature
- **California State University**
Bachelor of Arts in English Literature